

# Word of the Day

## Summer Term 2026

Week 38 – 15th June 2026



*'Words unlock the doors to a world of understanding...'*

# This Week's Words

Grasshopper

**law**

**body**

**circus**

**prison**

**hotel**

Shinobi

**ambiguous**

**varied**

**bisect**

**export**

**surreptitious**



**VOCABULARY NINJA**

# Grasshopper (Tier 1)

**law**

**body**

**circus**

**prison**

**hotel**



**VOCABULARY NINJA**

# Shinobi (Tier 2)

**ambiguous**

**varied**

**bisect**

**export**

**surreptitious**



**VOCABULARY NINJA**



# Grasshopper Word of the Day

## Word of the Day:

Pronunciation / Syllables

law  
(law)

Word Class  
(noun)

## Definition:

The law is a system of rules that a society or government develops in order to deal with crime, business agreements, and social relationships.



The **law** was there to keep people safe.

### Synonym:

rules  
order

### Antonym:

lawlessness  
disorganisation

### Prefix / Suffix:

pre-  
-ful

### Rhyme:

floor  
shore

### Link Word:

binding  
unjust



# Grasshopper Word of the Day

Word of the Day:

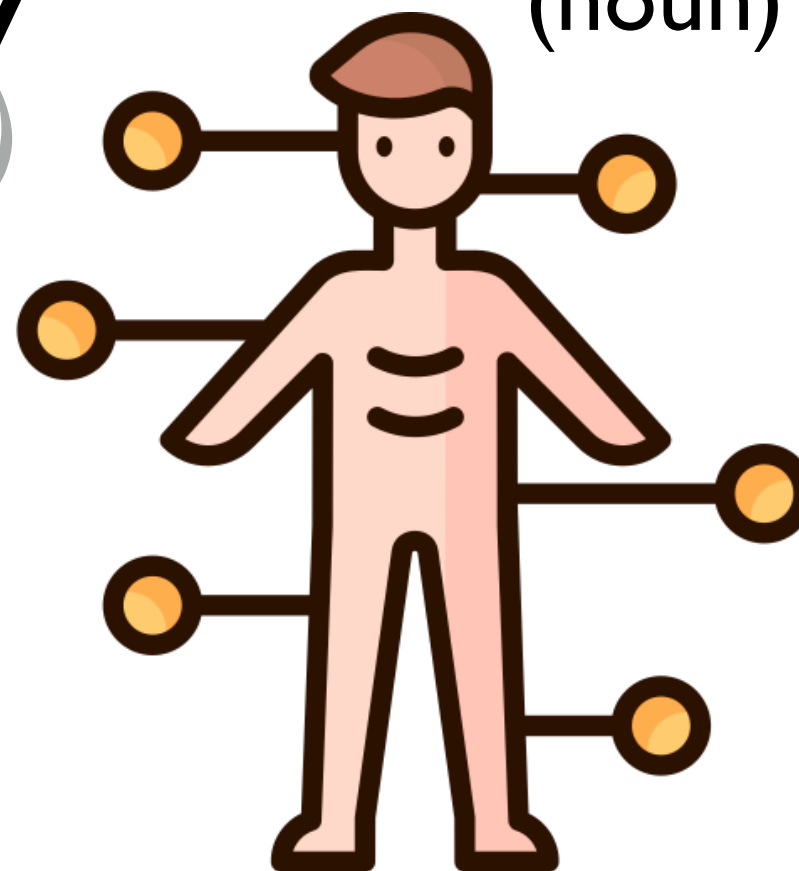
Pronunciation / Syllables

Definition:

Your body is all your physical parts, including your head, arms, and legs.

body  
(bod-y)

Word Class  
(noun)



Your **body** is very special and needs looking after.

Synonym:

anatomy

shape

Antonym:

soul

spirit

Prefix / Suffix:

anti-

-ily

Rhyme:

shoddy

embody

Link Word:

healthy

human



# Grasshopper Word of the Day

Word of the Day:

Pronunciation / Syllables

**circus**  
(*cir-cus*)

Word Class  
(noun)

Definition:

A circus is a group that consists of clowns, acrobats, and animals which travels around to different places and performs shows.



Class five took a trip to the **circus**.

Synonym:

festival  
spectacle

Antonym:

Prefix / Suffix:

Rhyme:

purpose

Link Word:

magical  
tent



# Grasshopper Word of the Day

Word of the Day:

Pronunciation / Syllables

prison  
(pris-on)

Word Class  
(noun)

Definition:

A prison is a building where criminals are kept as punishment or where people accused of a crime are kept before their trial.



They broke the law, so they had to go to **prison**.

Synonym:

jail

slammer

Antonym:

Prefix / Suffix:

im-

-er

Rhyme:

imprison

risen

Link Word:

secure

overcrowded





# Grasshopper Word of the Day

Word of the Day:

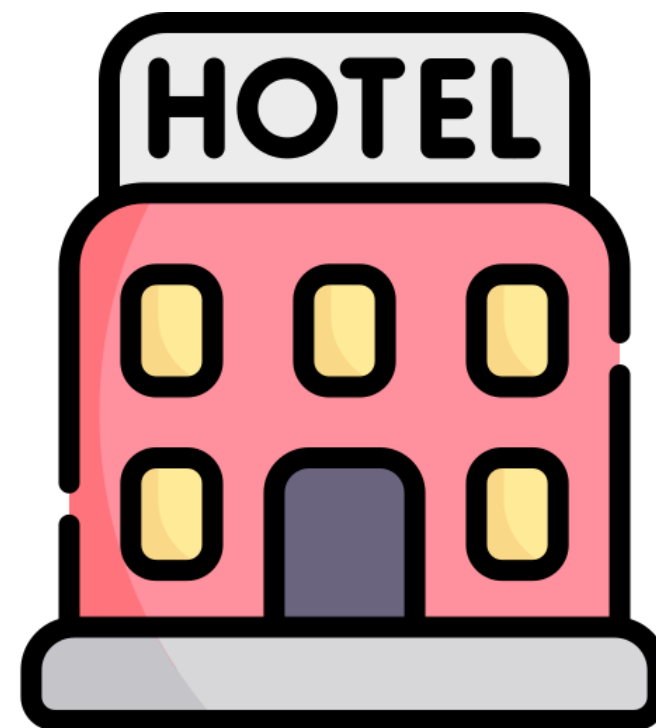
Pronunciation / Syllables

hotel  
(*ho-tel*)

Word Class  
(noun)

Definition:

A hotel is a building where people stay, for example on holiday, paying for their rooms and meals.



To **hotel** was full and had no rooms.

Synonym:

inn

lodge

Antonym:

Prefix / Suffix:

-ier

-s

Rhyme:

fell

tell

Link Word:

opulent

holiday



# Shinobi Word of the Day

Word of the Day:

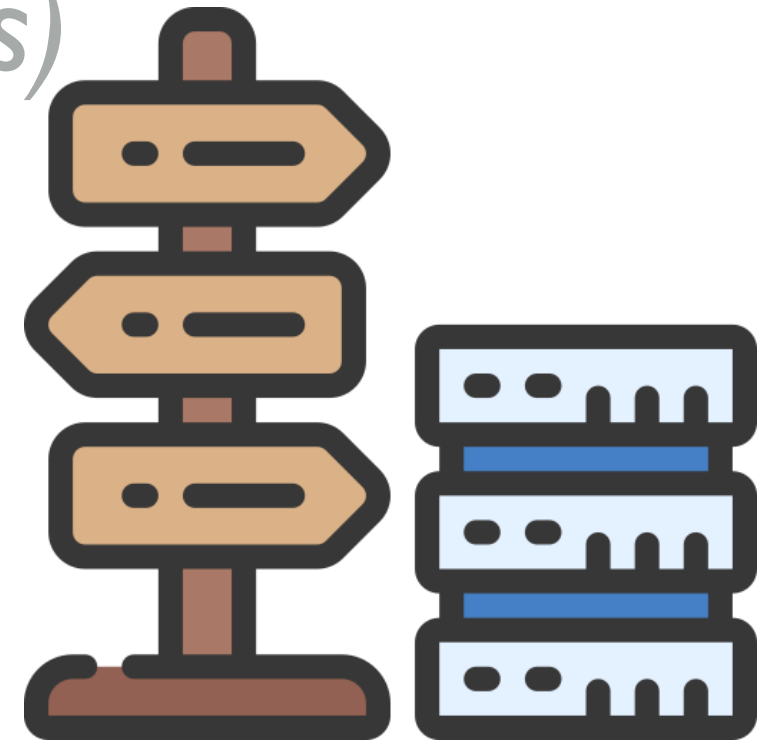
**ambiguous**  
(*am-bi-u-ous*)

Word Class  
(adjective)

Pronunciation / Syllables

## Definition:

If you describe something as ambiguous, you mean that it is unclear or confusing because it can be understood in more than one way.



The directions were **ambiguous**.

Synonym:

unclear

vague

Antonym:

clear

unambiguous

Prefix / Suffix:

un-

-ly

Rhyme:

continuous

Link Word:

deliberately

slightly



# Shinobi Word of the Day

Word of the Day:

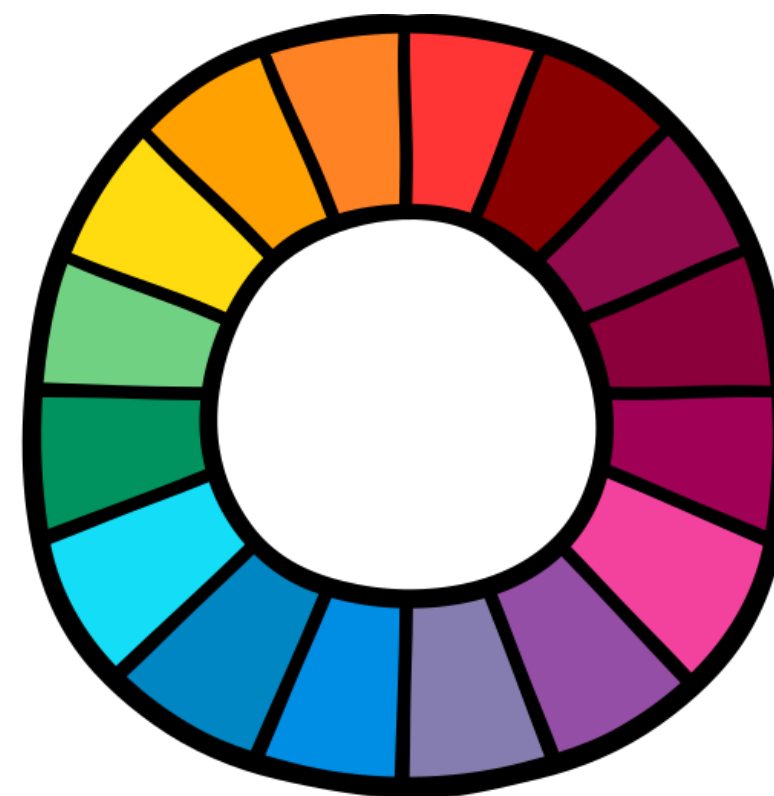
Pronunciation / Syllables

**varied**  
(*var-ied*)

Word Class  
(adjective)

Definition:

Something that is varied consists of things of different types, sizes, or qualities.



The colours in Jen's picture were **varied**.

Synonym:

diverse  
assorted

Antonym:

uniform  
same

Prefix / Suffix:

-able  
un-

Rhyme:

married  
carried

Link Word:

richly  
menu



# Shinobi Word of the Day

Word of the Day:

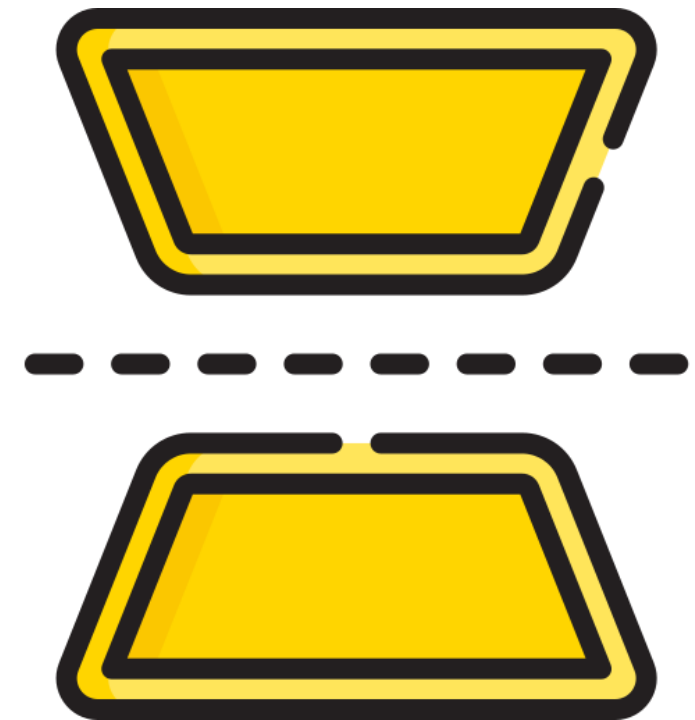
Pronunciation / Syllables

bisect  
(bi-sect)

Word Class  
(verb)

Definition:

If something long and thin  
bisects an area or line, it  
divides the area or line in half.



The line **bisected** the two shapes.

Synonym:

halve

split

Antonym:

join

unite

Prefix / Suffix:

-ing

-tion

Rhyme:

effect

subject

Link Word:

sharp

neatly



# Shinobi Word of the Day

Word Class  
(verb)

Word of the Day:

Pronunciation / Syllables

export  
(ex-port)

Definition:

To export products or raw materials means to sell them to another country.



Mr Robson needed to **export** the documents.

Synonym:

transport

ship

Antonym:

import

retain

Prefix / Suffix:

-ed

-er

Rhyme:

retort

escort

Link Word:

goods

promptly



# Shinobi Word of the Day

Word Class

Word of the Day: **surreptitious** (adjective)

Pronunciation / Syllables

(*sur-rep-ti-tious*)

## Definition:

A surreptitious action is done secretly.



Jo **surreptitiously** handed Alex a note.

Synonym:

sneaky

secret

Antonym:

blatant

open

Prefix / Suffix

-ly

-ness

Rhyme:

suspicious

delicious

Link Word:

secret

spy

# Vocabulary Laboratory



Describe / Definition:

Use it in a sentence:

**Focus Word** (write below):

**Word Class:**

**Synonyms:**

(words with same / similar meaning)

**Antonyms:**

(words with opposite meaning)

**Draw your sentence:**

**Rhymes:**

(words that sound the same)

**Link Words:**

(Example: football = pitch, team, player)

# Vocabulary Visualiser

Draw the  
**Grasshopper** words  
and bring them to life.



Word: law

Word: body

Word: prison

Word: hotel





# Vocabulary Visualiser

Draw the **Shinobi**  
words and bring  
them to life.



Word: ambiguous

Word: varied

Word: bisect

Word: export



# Matching Meanings

Draw lines from the **Grasshopper** words to their definitions.



## Grasshopper Word

law

body

circus

prison

hotel

## Grasshopper Definitions

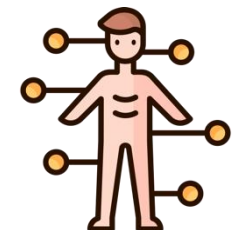
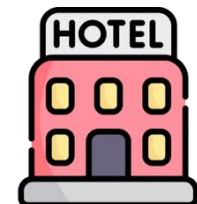
A \*\*\* is a group that consists of clowns, acrobats, and animals which travels around to different places and performs shows.

The \*\*\* is a system of rules that a society or government develops in order to deal with crime, business agreements, and social relationships.

A \*\*\* is a building where people stay, for example on holiday, paying for their rooms and meals.

A \*\*\* is a building where criminals are kept as punishment or where people accused of a crime are kept before their trial.

Your \*\*\* is all your physical parts, including your head, arms, and legs.



# Matching Meanings

Draw lines from the **Shinobi** words to their definitions.



## Shinobi Word

## Shinobi Definitions

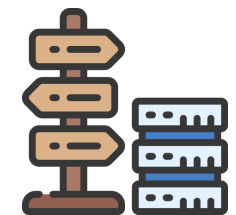
ambiguous

Something that is \*\*\* consists of things of different types, sizes, or qualities.



varied

If you describe something as \*\*\*, you mean that it is unclear or confusing because it can be understood in more than one way.



bisect

To \*\*\* products or raw materials means to sell them to another country.



export

A \*\*\* action is done secretly.



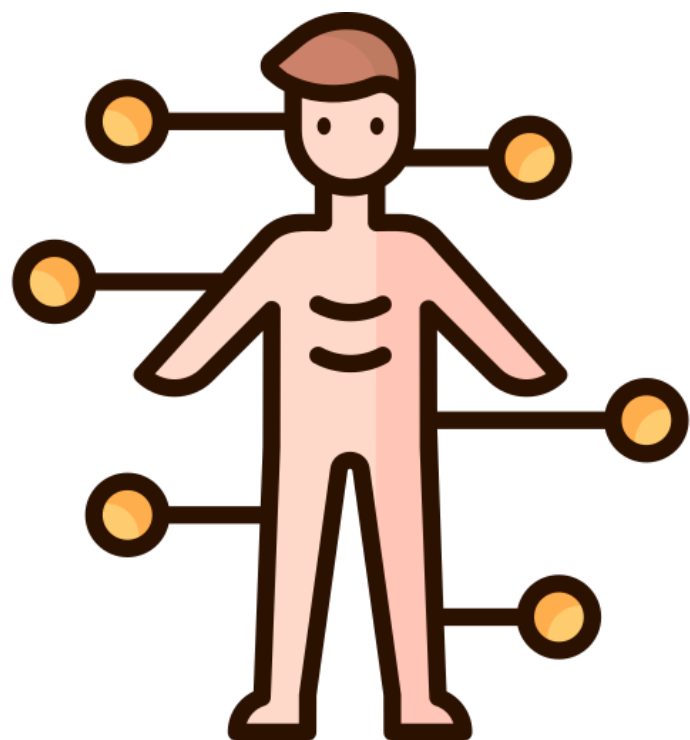
surreptitious

If something long and thin \*\*\* an area or line, it divides the area or line in half.





# law



# body





# circus

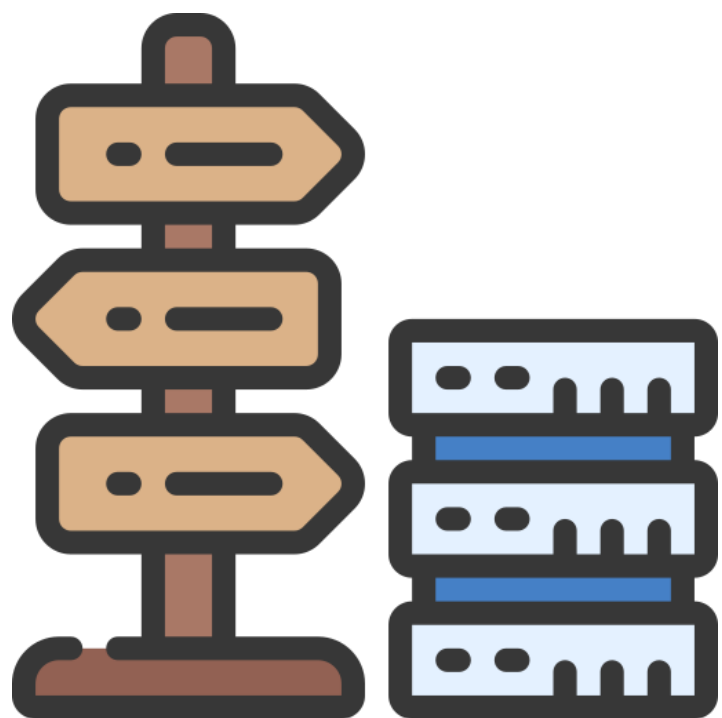
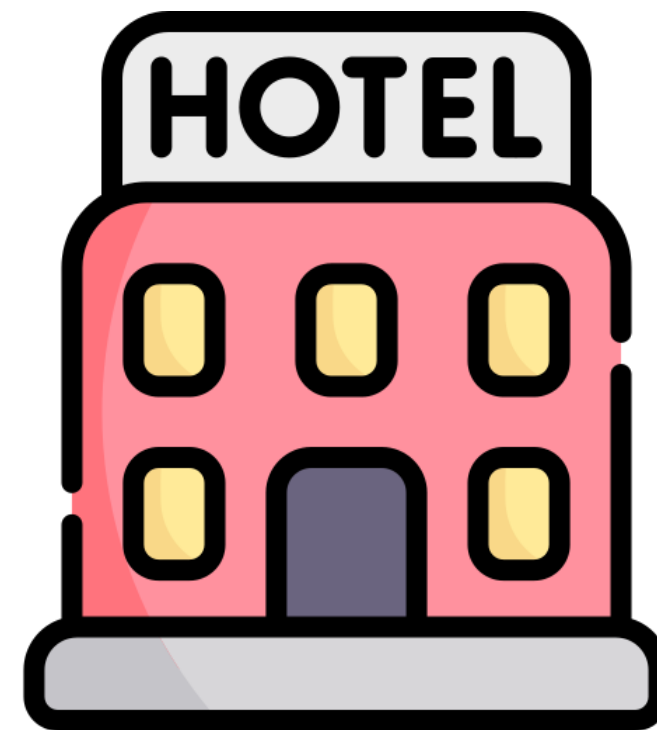


# prison





# hotel

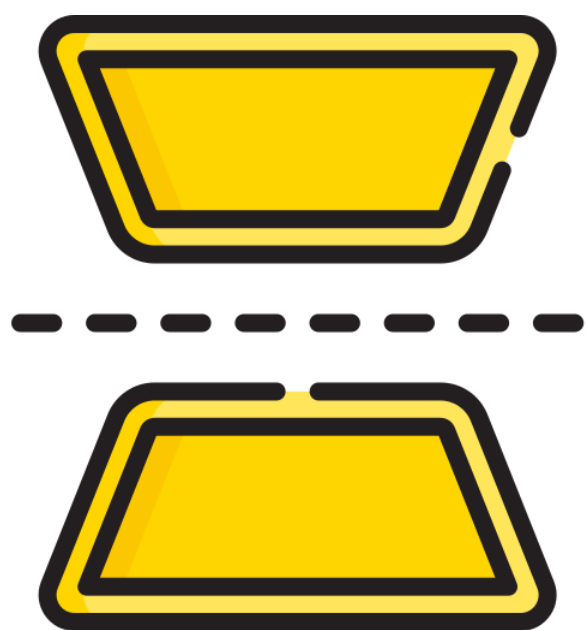


# ambiguous





# varied



# bisect





# export



# surreptitious

